

Harriman Utility Board

# RECURRING TRIMMING & RIGHT OF WAY MAINTENANCE

---

## HUB POLICIES

HUB-ELEC-ROW-102918-001

September 27, 2021

# Contents

General Statement .....	iii
Responsibility .....	iii
1. Information to Customers .....	1
2. Authority over Right of Way .....	1
3. Vegetation Management Schedule .....	1
4. Tree Replacement Program .....	1
5. Tree Cutting and Trimming .....	1
6. Clearance Guidelines .....	2
7. Debris and Clean-up .....	3
8. Herbicide Application Program .....	3
9. Minimum Line Clearance Diagrams.....	4

## General Statement

In order to provide a reliable electrical service for its customers, as well as ensure safety considerations for the general public and its employees and contractors, the Harriman Utility Board (HUB) has adopted the following policies regarding our Recurring Trimming and Right of Way Maintenance Program.

HUB strives to provide an enduring impact on a growing community through exceptional service. An ever-present and leading threat to this mission is the growth of trees and other vegetation in proximity to electrical system infrastructure. The purpose of HUB's Recurring Trimming and Right of Way Maintenance Program is to minimize service interruption and damage to utility lines and equipment while providing safe, reliable electric service at affordable rates.

## Responsibility

All policies for the health and safety of its consumers, employees, and contractors, as well as maintenance of electrical service are given for guidance and are derived from Tennessee Code Annotated (TCA) § 29-16-124 and ANSI Z133-2011 and A300, as well as other current codes and standards as applicable. These rules and regulations are subject to change without notice when approved by the Harriman Utility Board.

## 1. Information to Customers

- a. The Harriman Utility Board may utilize its website ([www.hub-tn.com](http://www.hub-tn.com)), news media, direct mail, monthly invoices, or other appropriate media outlets to inform customers about HUB's Right of Way policies.

## 2. Authority over Right of Way

- a. The Harriman Utility Board derives its Right of Way clearance authority from Tennessee Code Annotated (TCA) § 29-16-124.
- b. Tennessee Code Annotated grants a utility the right to both use and maintain an existing line owned by the same.
- c. There is no requirement for a written or recorded easement of Right of Way
- d. Objections to Right of Way must be made by the property owner within one (1) year from the date of initial installation of the utility line in question.

## 3. Vegetation Management Schedule

- a. HUB will schedule Right of Way clearance operations based on priority derived from number of outages occurring due to vegetation and trees. This will allow HUB to advise customers requesting that trees be cut as to when the work will be performed.

## 4. Tree Replacement Program

- a. Trees that are removed during routine trimming, may be replaced at the discretion of HUB's approved representative(s).
- b. HUB and the customer will mutually agree on a re-planting site(s) that prevents future growth from interfering with electrical service lines or other infrastructure. Dogwood, Redbud and other slow growing, flowering tree species are preferred.

## 5. Tree Cutting and Trimming

- a. The purpose of HUB's Right of Way maintenance policy is to ensure electrical service to our customers. While this may require trimming or cutting of vegetation and trees at various times, it is not the intention of HUB to compete with local, commercial tree trimming and removal firms. Trimming, cutting and removal of vegetation and or trees threatening personal property remains the responsibility of the owner.

- b. Trees shall be pruned according to ANSI A300 guidelines. This standard is an International Society of Agriculture best management practice, as well as the Electric Industry standard.
- c. Methods which tend to re-direct growth away from service lines and comply with ANSI 300 include:
  - i. Cleaning-Selected removal of dead, diseased, or broken branches
  - ii. Raising-Selective pruning of lower branches to provide vertical clearance
  - iii. Crown Reduction-Selective pruning to reduce a tree's height, or crown density
- d. The lateral pruning method shall be employed by HUB and its contractors in all trimming operations performed on HUB Right of Ways (ground to sky if possible).
- e. HUB will not trim trees or vegetation above service drops as this clearance is the responsibility of the property owner. However, HUB will remove a service drop for no charge (during regular business hours) to allow owners to trim or remove trees adjacent to it.
- f. HUB will determine at its own discretion whether or not vegetation or trees pose a threat to electric service, and which approved method(s) will be employed to mitigate the threat.
- g. In the event a diseased, dying or dead tree outside of the assumed Right of Way poses an imminent threat to electric service lines, HUB will make good-faith efforts to obtain the consent of the property owner to trim or cut it down at no expense.
- h. If a property owner refuses to allow HUB access to trim or cut vegetation or trees that threaten electrical service lines, they will be respectfully asked to make arrangement with a private contractor to do so. If no such arrangement is made, and subsequent damage occurs to the electrical service line as a direct result, HUB will affect repairs to restore electrical service as required. However, these repairs will in no way make HUB liable for any property damage, or removal of any debris associated with the fallen vegetation or trees.
- i. HUB will retain sole discretion in trimming or removal of vegetation and or trees at customer request.

## 6. Clearance Guidelines

- a. Final trimming and Right of Way clearances from overhead conductor, to include the system neutral are as follows:

69 kV Line	50'	From Center Phase (Both sides)
Three Phase	15'	From Center Phase (Both sides)
Single Phase	10'	From Phase (Both sides)
Neutral Line	10'	Minimum below Neutral
Refer to illustrations in Section 7		

## 7. Debris and Clean-up

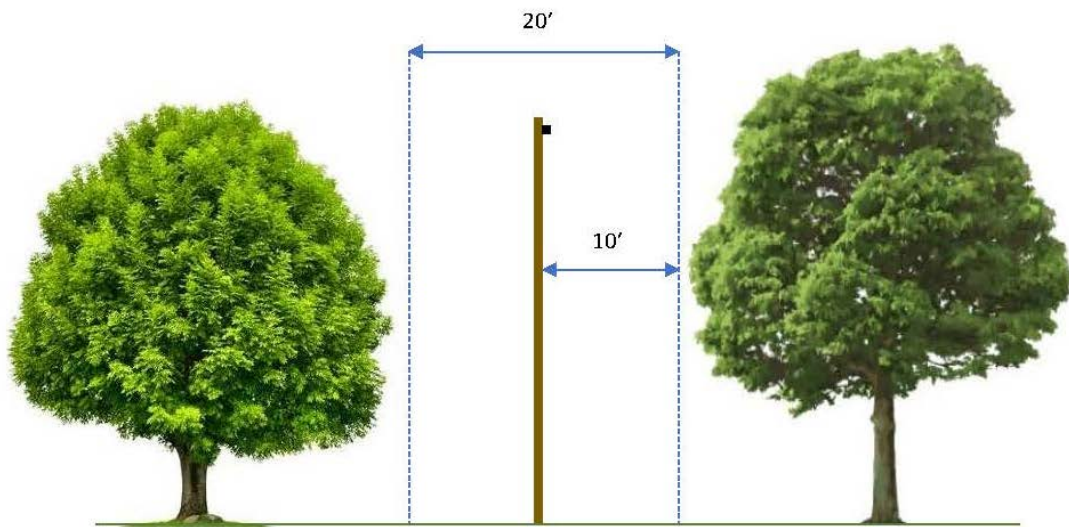
- a. During routine maintenance, the removal of debris and clean-up along Right of Ways will be conducted as follows:
  - i. HUB will remove and clean-up brush, wood, or debris caused by routine maintenance in areas currently maintained by property owners.
  - ii. HUB will not remove and clean-up brush, wood, or debris caused by routine maintenance in areas currently unmaintained by property owners, unless the property is located inside the City of Harriman.
  - iii. HUB is not responsible for removal or clean-up of any brush, wood or debris caused by natural effects, severe weather, or negligence.
- b. HUB will not routinely remove limbs, brush, trunks or debris resulting from any decision to trim or remove vegetation or trees at customer request.
- c. At its sole discretion, HUB may offer to perform said removal for a mutually agreed upon charge if requested by the customer.

## 8. Herbicide Application Program

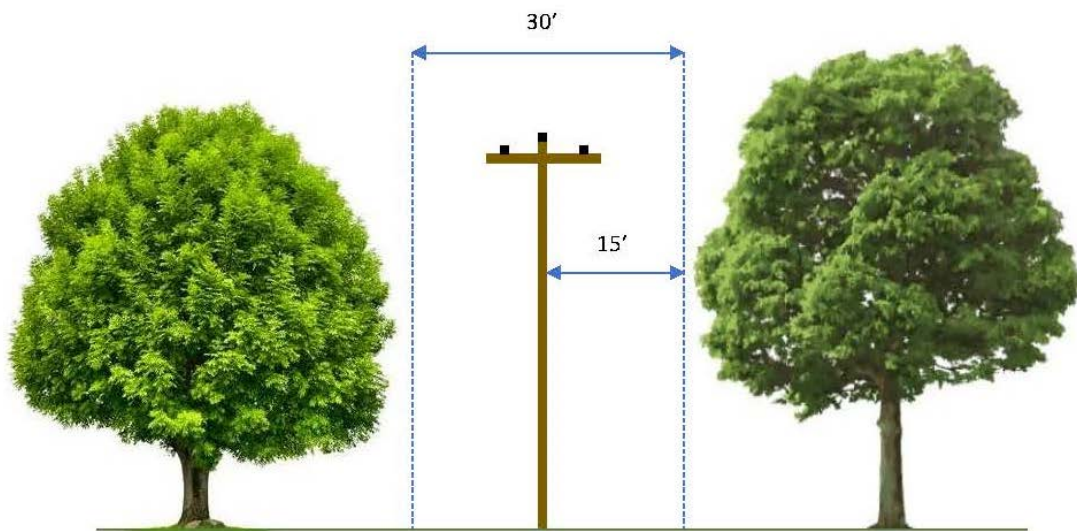
- d. Targeting tree and vegetation growth under and around electrical system lines and infrastructure is an essential element of long-term Right of Way management.
- e. Herbicide is the most cost-effective method in some areas of the system.
- f. Application of herbicides in Right of Ways shall be done in accordance with Tennessee Department of Agriculture guidelines and herbicide label directions.
- g. No herbicides will be applied without a certified applicator being present on site.

## 9. Minimum Line Clearance Diagrams

### a. Minimum Line Clearance for Distribution Circuits, Single Phase:



b. Minimum Line Clearance for Distribution Circuits, Three Phase:





c. Minimum Line Clearance for Transmission Circuits, 69 kV:

